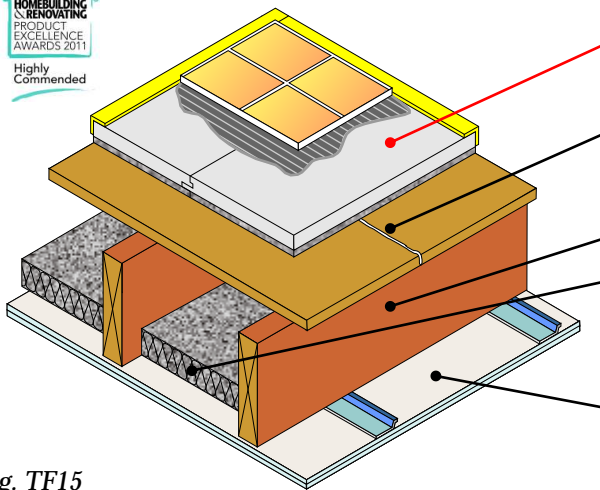


Existing timber joists  
Acoustic treatment laid on sub-floor  
Ceiling on resilient boards



<b>Floating floor treatment options</b>	ScreedBoard 28 (See <i>Table TF15</i> for full details)
<b>Floor decking</b>	15mm thick (min) OSB or existing floor boards (with all gaps sealed with suitable flexible mastic)
<b>Joists</b>	Solid timber joists
<b>Absorbing material</b>	<ul style="list-style-type: none"> <li>• 50mm FIBRE <i>fon</i> MICRO SLAB 50</li> <li>• 100mm (min) mineral wool insulation (45kg/m<sup>3</sup>) between joists</li> </ul>
<b>Ceiling</b>	See <i>Table TF15</i> ceiling treatment

Fig. TF15



**FASTRACKCAD**  
ARCHITECTURAL CAD DATABASES

Table TF15

PCT floating floor treatment options	Perimeter resilient flanking strip required	Ceiling treatment
<p><b>ScreedBoard® 28</b> High density composite resilient overlay treatment</p> <p>No need for screws Interlocking edges glued together with <i>Collecta SB</i> joint adhesive</p> <p><b>Typical PCT performance<sup>(3)</sup></b> <math>R_w + C_{tr} = 52\text{dB}</math> <math>L_{n,w} = 54\text{dB}</math></p> <p><b>Product information</b> Board dimensions: 28mm x 600mm x 1200mm Edge profile: Interlocking tongue &amp; groove Weight: 26.00kg/m<sup>2</sup> / 18.72kg per board <i>Collecta SB</i> joint adhesive: 1L (to suit 33m<sup>2</sup> board coverage)</p>	<p><b>YELOfon® FS50</b></p> <p>Pre-formed polyethylene foam flanking angle: 6mm x 50mm x 30mm x 2m installed around the perimeter of the flooring board to isolate floor from walls and skirting.</p>	<p><b>Ceiling boards must not penetrate or touch the floor joists</b> 16mm (min) metal resilient bars mounted at right angles to the joist at 400mm centres.</p> <p><b>Ceiling treatment</b> Two layers of gypsum-based board, composed of 15mm (nominal 12.5kg/m<sup>2</sup>) fixed with 25mm screws and a second layer of 15mm (nominal 12.5kg/m<sup>2</sup>) fixed with 42mm screws, with all joists staggered.</p>
<p><b>Underfloor heating below floating floor treatment</b></p> <p><b>(option 1)</b> Routed <b>X2i / X2i<sup>e</sup></b> High performance extruded polystyrene boards</p> <p><b>(option 2)</b> Routed or moulded expanded polystyrene (EPS) panel</p> <p><b>&lt;5 GWP</b> All components*</p> <p><b>Typical PCT performance<sup>(3)</sup></b> <math>R_w + C_{tr} = 52\text{dB}</math> <math>L_{n,w} = 54\text{dB}</math></p>	<p><b>YELOfon® ES5/100</b></p> <p>Polyethylene foam flanking strip: 5mm x 100mm x 50m installed around the perimeter of the flooring board to isolate floor from walls and skirting.</p>	<p><b>Construction note</b> Services must not puncture ceiling linings (except cables, which should be sealed with flexible sealant).</p>

\* Excluding X2i

**Construction notes**

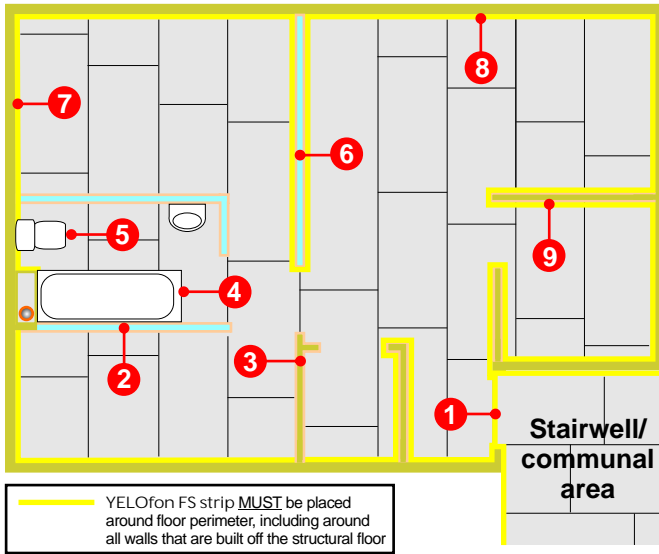
Materials must be installed in accordance with manufacturers' instructions to achieve stated acoustic values. Wall treatments **MUST** be isolated from the floor treatment with YELOfon FS50 or ES5/100 flanking strip. Ensure services do not come into contact with the floor

**Acoustic values**

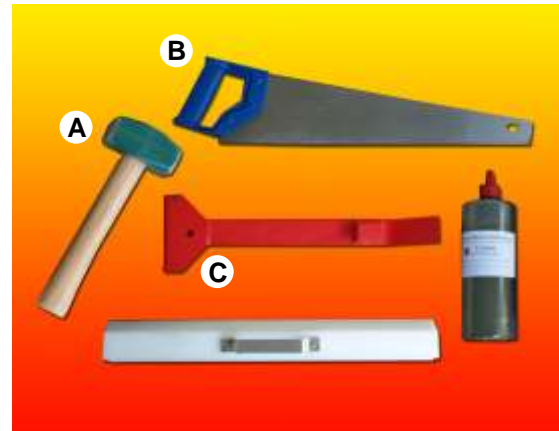
<sup>(3)</sup> Test data quoted was conducted in a UKAS accredited laboratory in accordance with Approved Document E: Annex B: Procedures for sound insulation testing. Airborne results tested in accordance with BS EN ISO 140-3:1995 Impact results tested in accordance with BS EN ISO 140-6: 1998

# Design & installation details - *Collecta* ScreedBoard® 28

The acoustic performance of the floor structure will be compromised if the ScreedBoard 28 is not completely isolated from the timber sub-floor, soil pipes, door frames, surrounding walls and their treatments. To address this risk, each potential problem area needs to be detailed accordingly.

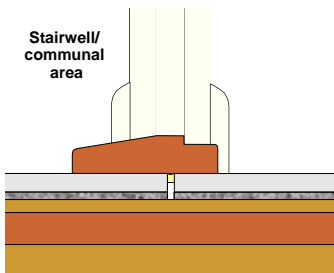


## Fixing tools



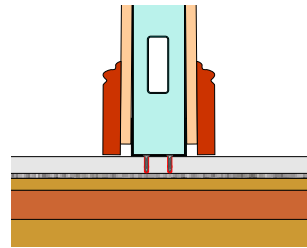
A. Club hammer  
B. Hand or skill saw  
C. ScreedBoard® "Pull bar"  
D. ScreedBoard® "Fixing batten"  
E. ScreedBoard® adhesive  
Packing shims (not shown)

### 1 Door threshold



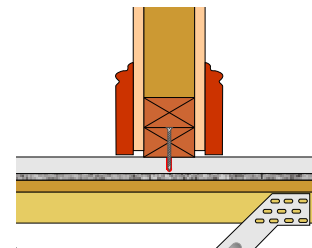
Leave a 5-10mm expansion gap between the habitable area and the communal area ScreedBoards.

### 2 Metal frame partition built off the floor treatment

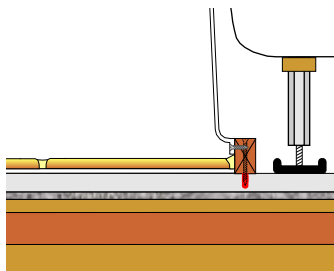


Non-load bearing metal frame or timber stud walls can be built directly off the ScreedBoard 28. Care should be taken to ensure screws DO NOT penetrate the resilient layer.

### 3 Timber stud partition built off the floor treatment

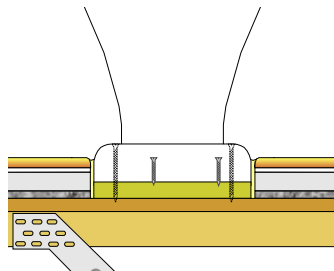


### 4 Baths, shower trays and sanitary ware built off floor treatment.



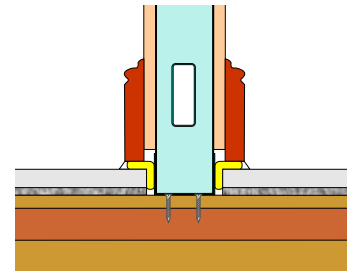
Baths, shower trays and sanitary ware can be built directly off the ScreedBoard 28. Under no circumstance should screws penetrate the resilient layer.

### 5 Baths, shower trays and sanitary ware built off the structural floor



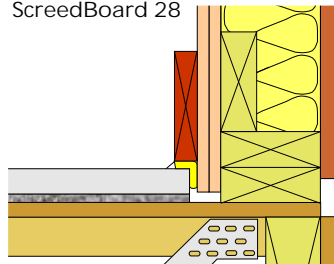
Baths, shower trays and sanitary ware built off the structural floor should be isolated from the ScreedBoard 28 and any floor finished.

### 6 Metal frame partition built off the structural floor



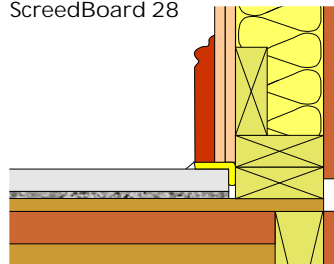
Lightweight partition walls built off the structural floor **MUST** be isolated from the ScreedBoard with YELOfon FS50 strip.

### 7 Wall treatment installed before the ScreedBoard 28



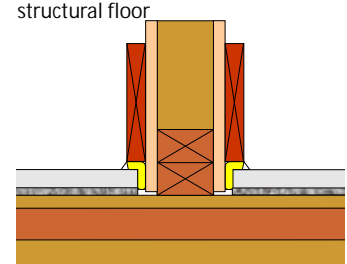
Wall treatments **MUST** be isolated from the ScreedBoard 28 with YELOfon FS50 strip.

### 8 Wall treatment installed after the ScreedBoard 28



Wall treatments **MUST** be isolated from the ScreedBoard 28 with YELOfon FS50 strip.

### 9 Timber stud partition built off the structural floor



Lightweight internal walls built off the structural floor **MUST** be isolated from the ScreedBoard with YELOfon FS strip.