

FIREPRO[®] **INTUMESCENT** **PIPE WRAPS CE**

Fire stop solution for plastic pipe penetrations



FIREPRO® INTUMESCENT PIPE WRAPS CE

ROCKWOOL Intumescent Pipe Wraps CE are tested to EN 1366-3:2009 and CE marked to provide assurance where specified. They offer a simple and more economical alternative to Firestop Pipe Collars CE, for fire stopping plastic pipework penetrations through fire rated walls and floors.



Advantages

- Simple to install with no mechanical fixings required
- Available to suit pipe diameters up to 250mm O.D.
- Up to EI120 fire resistance
- Tested in conjunction with Ablative Coated Batt seals
- Maintenance free
- Dry system
- Water resistant

Description

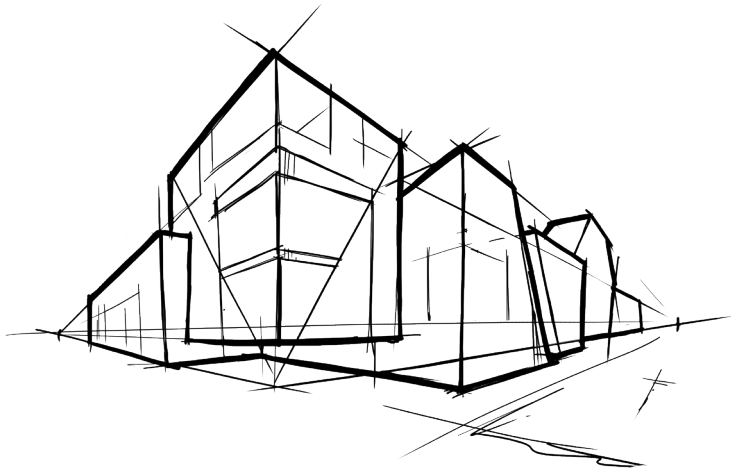
Intumescent Pipe Wraps CE are designed to seal service penetrations in apertures containing combustible plastic pipes. Pipe Wraps CE comprise layers of a graphite based intumescent sheet encapsulated in a polythene sheath. All Pipe Wraps CE are supplied in correct lengths to suit the pipe diameter.

Intumescent Pipe Wraps CE are tested to plastic services penetrating flexible and rigid wall constructions, rigid floors and in Ablative Coated Batt seals.

Pipe Wraps CE are tested with end capping configurations that cover U/C pipes.

Applications

- Fire stopping plastic pipe penetrations in rigid/flexible walls and rigid floors
- Can be applied to PVC, UPVC, Polypropylene, PE & HDPE pipe materials



Performance

Fire performance
ROCKWOOL Intumescent Pipe Wraps CE can provide up to 2 hours fire protection to plastic pipework where it passes through fire rated walls and floors.

Table 1
Pipe Wraps installed within both sides of rigid floor min. 150mm thickness *(see Figure 1 below)*

BS EN 1366-3:2009 - 150mm Rigid Floor				
Service Type	Wall Thickness (mm)	Pipe Diameter (mm)	Integrity	Insulation
PVC	1.8 - 9.6	32 - 200	60	60
PVC	1.8 - 7.7	32 - 200	120	90
PVC	1.8	32 - 50	120	120
PP	2.9 - 18.2	32 - 200	120	90
PP	2.9	32 - 50	120	120
HDPE	2.9 - 11	32 - 200	120	120

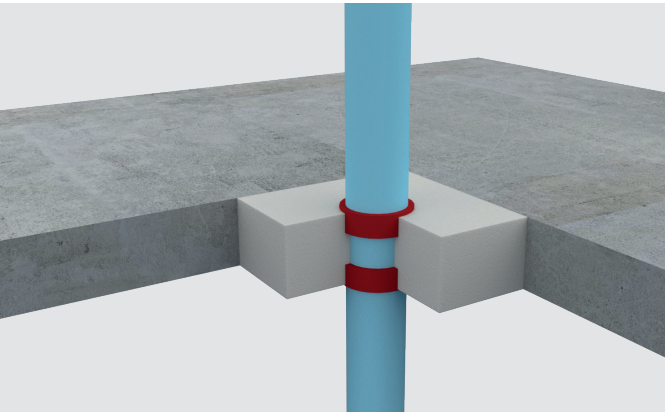


Figure 1
Pipe Wrap CE positioned within floor slab

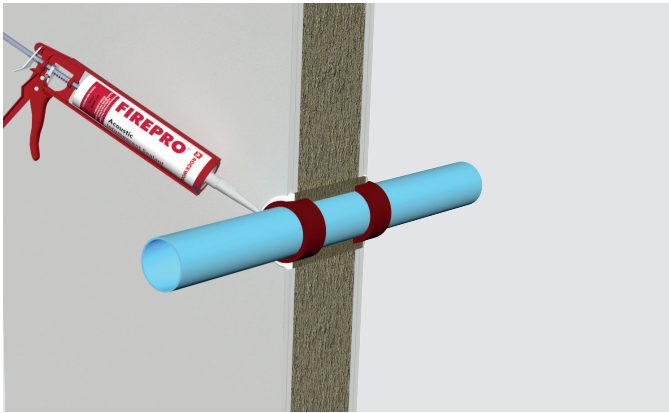


Figure 2
Pipe Wrap CE in position in wall

Table 2
Fitted flush both sides of rigid or flexible wall min. 100mm thick *(see Figure 2 above)*

BS EN 1366-3:2009 - 100mm Rigid or Flexible Wall				
Service Type	Wall Thickness (mm)	Pipe Diameter (mm)	Integrity	Insulation
PVC	1.8 - 9.6	32 - 200	120	120
PP	2.9 - 18.2	32 - 200	120	120
PE	2.9 - 18.4	32 - 200	120	120

Table 3
Pipe Wraps CE installed within Ablative Coated Batt seal *(see Figure 3 below)*

EN 1366-3 - Up to 90 minute flexible/rigid wall construction - void size max 600mm x 600mm					
	Service Type	Wall Thickness (mm)	Pipe Diameter (mm)	Integrity	Insulation
50mm & 60mm ACB - single layer patress both faces	PVC	2.9 - 18.4	50 - 200	60	60
	PP	1.8 - 9.6	50 - 200	60	60
	PE	2.9 - 18.2	50 - 200	60	60

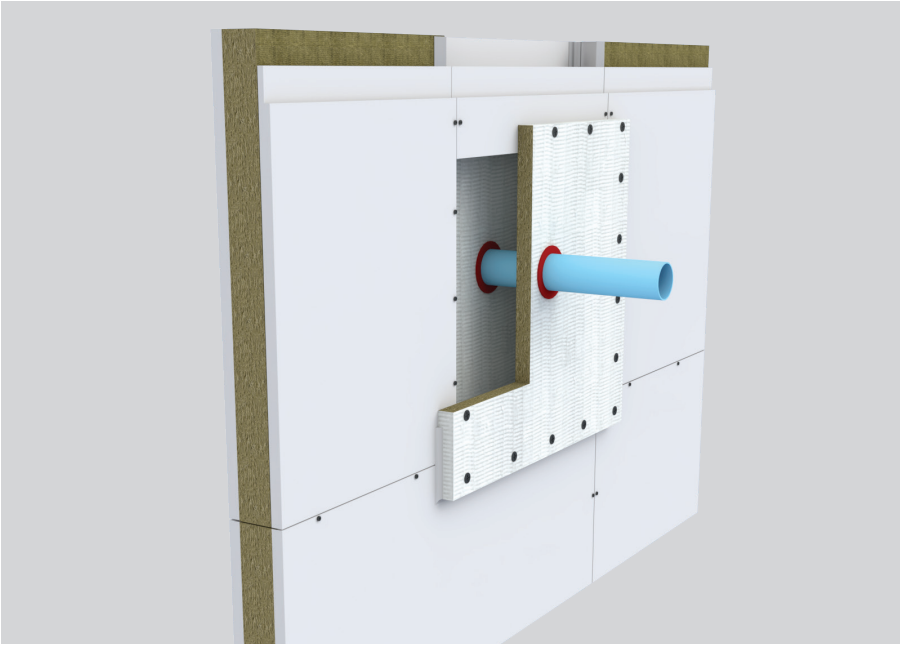


Figure 3
Pipe Wrap CE in Ablative Coated Batt Wall seal

All pipes tested according to EN 1366-3 have been tested with a specific pipe end configuration. All pipes have been tested U/C and are suitable for C/C pipe end configurations..

The EN test standard EN 1366-3 states, "it is important to ensure that sealing systems have been tested with appropriate pipe end conditions."

The specification of pipe closure devices will be determined based on the scope of test data and whether the pipework is ventilated or not.

Installation

The product is intended to be wrapped around the outside diameter of the pipework and is secured by means of a self-adhesive strip.

Apertures or core holes in the separating element shall be maximum oversize with respect to the pipe diameter as follows:

- 32mm - 50mm OD = 4mm
- 160mm OD = 10mm
- 200mm OD = 12mm
- 250mm OD = 14mm

The Intumescent Pipe Wrap CE is then positioned each side within the compartment wall or floor so that the edge of the product is left exposed at the face of the wall or soffit. The remaining annular space/gap shall be infilled using Firepro Acoustic Intumescent Sealant or for larger void sizes, the Intumescent Pipe Wrap CE can be sealed into the structure with ROCKWOOL Firestop Compound (see Figures 4 & 5 below).

Under fire conditions, the intumescent material expands against the structure and fills the void left by the burnt out plastic.

Where pipes are insulated, please refer to the Insulated Fire Sleeve data sheet.

Intumescent Pipe Wraps CE are used to prevent fire penetration in plastic pipes that pass through fire rated walls and floors for a specified period of up to 2 hours. They are manufactured as a sealed unit to the correct length and width to suit the pipe diameter and fire rating.

Walls should be a minimum of 100mm thickness and floors a minimum 150mm thickness. All walls should have the same or improved period of fire resistance as that required of the sealing system.

Services should be supported no further than 400mm from the surface of the separating element for walls and 400mm above the surface of the floor.

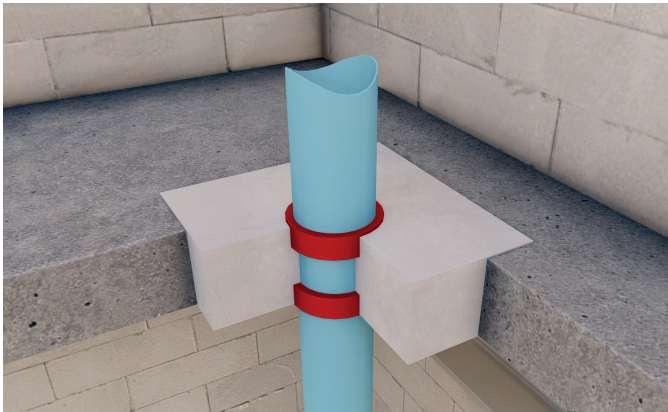


Figure 4
Intumescent Pipe Wrap CE sealed into compartment floor with ROCKWOOL Firestop Compound

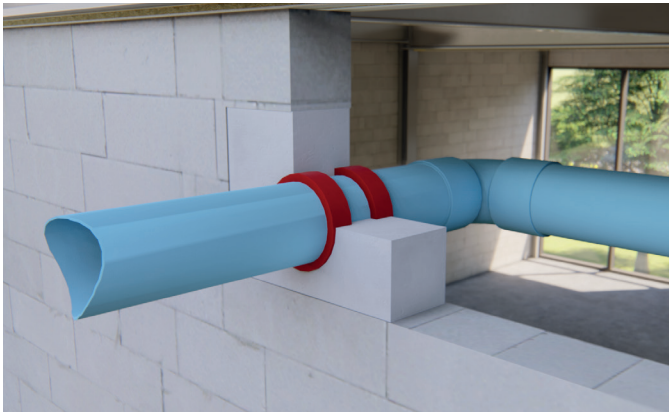


Figure 5
Intumescent Pipe Wrap CE sealed into a compartment wall with ROCKWOOL Firestop Compound

Installation instructions

1. Check that the pipe surface is clean and clear of debris, dust or loose particles.
2. Aperture temperature should be 5°C or greater at time of installation.
3. Ensure that the appropriate Pipe Wrap CE is installed to suit the outside pipe diameter and required fire rating.
4. An annular space will be required around the service to allow sufficient installation depth.
5. Wrap around pipe and fix with integral self-adhesive strip. Ensure that when installing the Pipe Wrap CE to the pipework, that it is installed 5mm proud of the substrate's surface.
6. For larger voids, the Pipe Wrap CE can be sealed into the structure with ROCKWOOL Firestop Compound.
7. Slide into position ensuring that both edges are exposed either side of walls and floors.
8. Annular gaps or spaces present after installation of the Pipe Wrap CE can be infilled using FIREPRO® Acoustic Intumescent Sealant.

Technical information

Standards and Approvals

FIREPRO® Intumescent Pipe Wraps CE have been tested to BS EN 1366-3:2009.

FIREPRO® Intumescent Pipe Wraps CE are third party accredited through Certifire.

Product information

Property	Description
Pipe Diameter	Up to 250mm O.D.
Width	40mm
Thickness	2mm at 32mm, up to 12mm at 250mm
Fire Resistance	Up to 2 hours
Density	1.2g/cm ³
Expansion Rate	20:1
Application Temperature	-5 to 40°C
Shelf Life	N/A if stored indoors in a cool, dry, well ventilated area

Specification clauses

ROCKWOOL Intumescent Pipe Wraps CE are associated with the following NBS clauses:

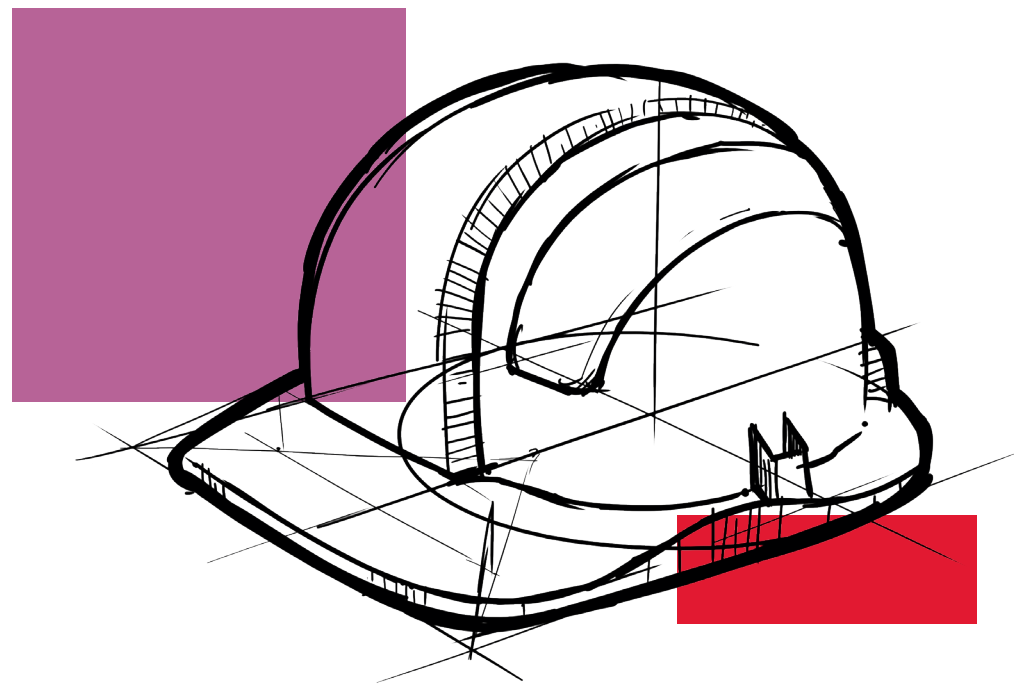
- P12 Fire stopping systems
- 375 Pipe Collar – Insulated Wrap

Disclaimers

This product should only be utilised for applications as outlined in the relevant ROCKWOOL product datasheet and in accordance with the relevant ROCKWOOL Fire Resistance Testing. Additionally the product must be installed in accordance with the current ROCKWOOL guidelines. For further information please visit www.rockwool.co.uk or contact our Technical Solutions Team on 01656 868490.

Supporting information

For further information relating to any aspect of the FIREPRO® range, please refer to the applicable ROCKWOOL standard details at www.rockwool.co.uk or contact the ROCKWOOL technical solution team on 01656 868490, or write to: technical.solutions@rockwool.co.uk



Sustainability

As an environmentally conscious company, ROCKWOOL promotes the sustainable production and use of insulation and is committed to a continuous process of environmental improvement.

All ROCKWOOL products provide outstanding thermal protection as well as four added benefits:



Fire resistance



Acoustic comfort



Sustainable materials



Durability

Health & Safety

The safety of ROCKWOOL stone wool is confirmed by current UK and Republic of Ireland health & safety regulations and EU directive 97/69/EC: ROCKWOOL fibres are not classified as a possible human carcinogen.

A Material Safety Data Sheet is available and can be downloaded from www.rockwool.co.uk to assist in the preparation of risk assessments, as required by the Control of Substances Hazardous to Health Regulations (COSHH).

Environment

Made from a renewable and plentiful naturally occurring resource, ROCKWOOL insulation saves fuel costs and energy in use and relies on trapped air for its thermal properties.

ROCKWOOL insulation does not contain (and has never contained) gases that have ozone depletion potential (ODP) or global warming potential (GWP).

ROCKWOOL is approximately 97% recyclable. For waste ROCKWOOL material that may be generated during installation or at end of life, we are happy to discuss the individual requirements of contractors and users considering returning these materials to our factory for recycling.



Interested?

For further information, contact the Technical Solutions Team on 01656 868490 or email technical.solutions@rockwool.co.uk

Visit www.rockwool.co.uk to view our complete range of products and services.

Copyright ROCKWOOL September 2020.

The ROCKWOOL Trademark

ROCKWOOL® - our trademark

The ROCKWOOL trademark was initially registered in Denmark as a logo mark back in 1936. In 1937, it was accompanied with a word mark registration; a registration which is now extended to more than 60 countries around the world.

The ROCKWOOL trademark is one of the largest assets in the ROCKWOOL Group, and thus well protected and defended by us throughout the world.

If you require permission to use the ROCKWOOL logo for your business, advertising or promotion. You must apply for a Trade Mark Usage Agreement. To apply, write to:
marketcom@rockwool.com

Trademarks

The following are registered trademarks of the ROCKWOOL Group:

- ROCKWOOL®
- ROCKCLOSE®
- RAINSCREEN DUO SLAB®
- HARDROCK®
- ROCKFLOOR®
- FLEXI®
- BEAMCLAD®
- FIREPRO®

Disclaimer

ROCKWOOL Limited reserves the right to alter or amend the specification of products without notice as our policy is one of constant improvement. The information contained in this brochure is believed to be correct at the date of publication. Whilst ROCKWOOL will endeavour to keep its publications up to date, readers will appreciate that between publications there may be pertinent changes in the law, or other developments affecting the accuracy of the information contained in this brochure. The applications referred to within the brochure do not necessarily represent an exhaustive list of applications. ROCKWOOL Limited does not accept responsibility for the consequences of using ROCKWOOL in applications different from those described within this brochure. Expert advice should be sought where such different applications are contemplated, or where the extent of any listed application is in doubt.

© ROCKWOOL 2020. All rights reserved.

Notes

Photography and Illustrations

The product illustrations are the property of ROCKWOOL Ltd and have been created for indicative purposes only.

Unless indicated below, the photography and illustrations used in this guide are the property of ROCKWOOL Limited. We reserve all rights to the usage of these images.

If you require permission to use ROCKWOOL images, you must apply for a Usage Agreement. To apply, write to:
marketcom@rockwool.com

February 2021

ROCKWOOL Limited

Pencoed
Bridgend
CF35 6NY

Tel: 01656 862 621

info@rockwool.co.uk

rockwool.co.uk

