

Insulation  
Great Britain & Ireland

Nineteenth Issue | 03/2026

# Thermaroom® TR27

Insulation for flat roofs waterproofed with fully adhered single-ply, partially bonded built-up felt, mastic asphalt and cold liquid applied waterproofing



---

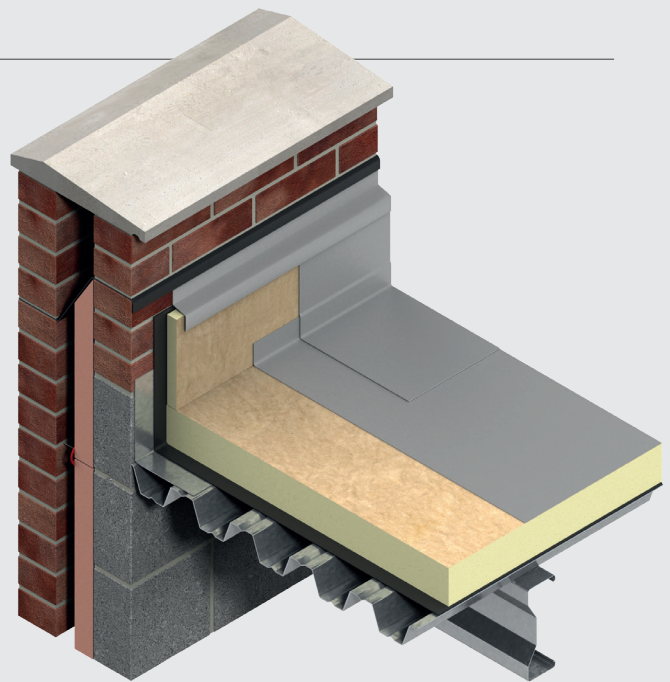
# Contents

---

<b>Introduction</b>	<b>3</b>
<b>Product details</b>	<b>4</b>
The facings	4
The core	4
Standards & approvals	4
Standard dimensions	4
Compressive stress	4
Water vapour resistivity	4
Durability	4
Resistance to solvents, fungi & rodents	4
Fire performance	5
FM Approval	5
Thermal properties	5
<b>Typical constructions and U-values</b>	<b>6</b>
Assumptions & U-value table key	6
Concrete deck	6
Timber deck	7
Metal deck	7
Green roof systems	8
<b>Design considerations</b>	<b>9</b>
Linear thermal bridging	9
Responsible sourcing	10
Sustainability & responsibility	10
Specification clause	10
Product classifications	10
Building Information Modelling (BIM)	10
Wind loading	10
Falls	10
Tapered roofing	10
Roof waterproofing	11
Water vapour control	11
Roof loading / traffic	12
Spanning on metal decks	12
Green roofs	12
<b>Sitework</b>	<b>13</b>
Board size selection	13
Installing over metal decks	13
Installing over concrete decks	13
Installing over plywood decks	14
Installing over existing flat roofs	15
Installing over existing composite panel roofs	15
Mechanical fixings	16
Installing in two layers	16
General	17
<b>Mechanical fixing patterns</b>	<b>18</b>
<b>About Kingspan Insulation</b>	<b>19</b>
Products & solutions	19
Company details	23
Services	23
Planet Passionate	24

# Introduction

- High performance rigid thermoset polyisocyanurate (PIR) insulation - thermal conductivities as low as 0.024 W/mK
- For FM Approval see page 5
- Fully compatible with single-ply non-bituminous membranes that are fully bonded with solvent based adhesive systems
- Fully compatible with most bitumen based and mastic asphalt waterproofing systems
- Compatible with most green roof systems
- Resistant to the passage of water vapour
- Easy to handle and install compared to some other commonly used insulants
- Ideal for new build and refurbishment



Visit our free online U-value calculator.  
Offering free, quick and easy calculations  
for wall, floor and roof constructions.

## Useful links

### Website

[Kingspan Thermarroof® TR27 GB webpage](#)

[Kingspan Thermarroof® TR27 IE webpage](#)

### Certification

[Kingspan Thermarroof® TR27 BES 6001 Certificate of Approval](#)

[Kingspan Thermarroof® TR27 BBA Certificate](#)

### Declaration of Performance (DoP)

[Kingspan Thermarroof® TR27 Declaration of Performance \(UKDoP\)](#)

[Kingspan Thermarroof® TR27 Declaration of Performance GB \(CE DoP\)](#)

[Kingspan Thermarroof® TR27 IE \(CE DoP\)](#)

# Product details

## The facings

Kingspan Thermaroof® TR27 is faced on both sides with a coated glass tissue, autohesively bonded to the insulation core during manufacture.

## The core

The core of Kingspan Thermaroof® TR27 is a fibre-free rigid thermoset polyisocyanurate (PIR) insulant.



## Standards & approvals

Kingspan Thermaroof® TR27 is manufactured in accordance with the requirements of BS EN 13165: 2012 + A2: 2016 (Thermal insulation products for buildings. Factory made rigid polyurethane foam (PU) products. Specification).

Kingspan Thermaroof® TR27 is also manufactured under a management system certified to ISO 9001: 2015 (Quality Management System), ISO 14001: 2015 (Environmental Management System), ISO 45001: 2018 (Occupational Health and Safety Management System), ISO 50001: 2018 (Energy Management System) and ISO 37301: 2021 (Compliance Management System).

The current manufactured range (in thicknesses of 25 - 160 mm), produced at Kingspan Insulation's Pembridge (Herefordshire) and Selby (North Yorkshire) manufacturing facilities, is covered by BBA Certificate 16/5332.



## Standard dimensions

Kingspan Thermaroof® TR27 is available in the following standard size(s):

Nominal dimension		Availability		
Length	(mm)	1200	1200	2400
Width	(mm)	600	1200	1200
Insulant thickness	(mm)	Refer to local distributor, Kingspan Insulation or Kingspan Insulation price list for current stock and non-stock sizes.		

## Compressive stress

The declared compressive stress of Kingspan Thermaroof® TR27 is 150 kPa at 10% compression, when tested to BS EN 826 (Thermal insulating products for building applications. Determination of compression behaviour).

## Water vapour resistivity

When tested in accordance with BS EN 12086 (Thermal insulating products for building applications. Determination of water vapour transmission properties), Kingspan Thermaroof® TR27 produced at Kingspan Insulation's Pembridge (Herefordshire) and Selby (North Yorkshire) manufacturing facilities achieves a resistance of 300 MNs/g for the insulation core and 1 MNs/g for the glass tissue facing. Kingspan Thermaroof® TR27 Systems should always be installed over a vapour control layer or sealed metal deck (see 'Water vapour control' on page 11).

## Durability

If correctly installed, Kingspan Thermaroof® TR27 will remain effective for the life of the building. Its durability depends on the supporting structure and the conditions of its use.

## Resistance to solvents, fungi & rodents

The insulation core is resistant to short-term contact with petrol and with most dilute acids, alkalis and mineral oils. However, it is recommended that any spills be cleaned off fully before the boards are installed. Ensure that safe methods of cleaning are used, as recommended by the suppliers of the spilt liquid. The insulation core is not resistant to some solvent-based adhesive systems, particularly those containing methyl ethyl ketone. Adhesives containing such solvents should not be used in association with this product. Damaged boards or boards that have been in contact with harsh solvents or acids should not be used.

The insulation core and facings used in the manufacture of Kingspan Thermaroof® TR27 resist attack by mould and microbial growth, and do not provide any food value to vermin.

# Product details

## Fire performance

For guidance regarding the fire safety requirements of the Building Regulations / Standards, refer to the relevant Technical Bulletins and links to Government websites at [www.kingspaninsulation.co.uk/fireregulations](http://www.kingspaninsulation.co.uk/fireregulations).

Under System 4 AVCP, Kingspan Thermaroof® TR27 has a Euroclass rating of F.

There can be materials placed above the insulation layer within a roofing system including, but not limited to, waterproofing materials, reinforcement layers, primers and carrier membranes. These additional materials complete the roofing system. As such, the fire performance of a roofing system is predominantly determined by these finishes in combination with the insulation.

Compliance for meeting the fire safety requirements of the Building Regulations / Standards can be evaluated by testing the fire performance of the roofing system. The most commonly used route to compliance involves testing the full roofing system and uses test method CEN / TS 1187: 2012 Test 4 (Test methods for external fire exposure to roofs), see below table. External roof exposure testing is typically carried out by the waterproofing manufacturer / system supplier, due to the complexities of the roofing system outlined above.

NB Test evidence to demonstrate compliance with the fire safety requirements of the Building Regulations / Standards incorporating Kingspan Thermaroof® TR27 within a roof system should be provided by the chosen waterproofing system supplier. Without the required classification for the proposed roof system, achieved through either an external roof exposure test or an overlay of inorganic material, the use of Kingspan Thermaroof® TR27 must be restricted to at least 20 metres in England and 24 metres in Scotland, or more from any point of the relevant boundary.

Further details on the fire performance of Kingspan Insulation products and systems incorporating the products, may be obtained from the Kingspan Insulation Technical Service Department (see rear cover for details).

## FM Approval

Kingspan Thermaroof® TR27 is available with FM Approval to FM 4470 (Examination Standard for Single-Ply, Polymer-Modified Bitumen Sheet, Built-Up Roof (BUR) and Liquid Applied Roof Assemblies for use in Class 1 and Non-combustible Roof Deck Construction) April 2022, subject to conditions of approval. Product manufactured at the Pembridge (Herefordshire), Selby (Yorkshire) and Castleblayney (Co. Monaghan) sites, in individual layers of 40 - 160 mm or multi-layers of up to 280 mm (with any combination respecting the minimum and maximum single layers) are covered by the FM Approval. Please contact Kingspan Insulation's Technical Service Department (see rear cover for details).



Not all thicknesses and roof deck constructions are covered by the FM Approval. Further details of the current FM Approved thicknesses and roof deck constructions can be located on [www.fmapprovals.com/roofnav](http://www.fmapprovals.com/roofnav) or [www.roofnav.com](http://www.roofnav.com) by searching 'Kingspan Therma'. Alternatively please contact Kingspan Insulation's Technical Service Department (see rear cover for details).

## Thermal properties

The  $\lambda$ -values and R-values detailed below are quoted in accordance with BS EN 13165: 2012 + A2: 2016 (Thermal insulation products for buildings. Factory made rigid polyurethane foam (PU) products. Specification).

### Thermal conductivity

The boards achieve a thermal conductivity ( $\lambda$ -value) of:  
0.027 W/mK (insulant thickness < 80 mm);  
0.025 W/mK (insulant thickness 80 - 119 mm); and  
0.024 W/mK (insulant thickness  $\geq$  120 mm).

### Thermal resistance

Thermal resistance (R-value) varies with thickness and is calculated by dividing the thickness of the board (expressed in metres) by its thermal conductivity. The resulting number is rounded down to the nearest 0.05 ( $\text{m}^2\text{K}/\text{W}$ ).

Insulant thickness (mm)	Thermal resistance ( $\text{m}^2\text{K}/\text{W}$ )
25	0.90
30	1.10
40	1.45
50	1.85
60	2.20
80	3.20
90	3.60
100	4.00
110	4.40
120	5.00
130	5.40
140	5.80
150	6.25
160	6.65

NB Refer to local distributor, Kingspan Insulation or Kingspan Insulation price list for current stock and non-stock sizes.

NB Manufactured thicknesses may vary between GB and IE.

# Typical constructions and U-values

## Assumptions

The U-values in the tables that follow have been calculated using the method detailed in BS EN ISO 6946: 2017 (Building components and building elements. Thermal resistance and thermal transmittance. Calculation methods), and using the conventions set out in BR 443 (Conventions for U-value calculations). They are valid for the constructions shown in the details immediately above each table.

These examples are based on Kingspan Thermaroof® TR27 waterproofed using either a fully adhered single-ply membrane, mastic asphalt, partially bonded built-up felt, or under a cold liquid applied waterproofing system. The insulation board is: fully bonded to a sealed metal deck, or a vapour control layer, which has itself been fully bonded to the type of deck stated for each application; or mechanically fixed through a sealed metal deck, or a vapour control layer, which has itself been loose-laid directly over the type of deck stated for each application. The ceiling, where applicable, is taken to be a 3 mm skim coated 12.5 mm plasterboard with a cavity between it and the underside of the deck.

NB When calculating U-values BS EN ISO 6946: 2017, the type of mechanical fixing used may change the thickness of insulation required. These calculations assume telescopic tube fasteners with a thermal conductivity of 1.00 W/mK or less, the effect of which is insignificant.

NB For the purposes of these calculations the standard of workmanship has been assumed good, and therefore the correction factor for air gaps has been ignored.

NB The figures quoted are for guidance only. A detailed U-value calculation and a condensation risk analysis should be completed for each project.

NB If your construction is different from those specified, and / or to gain a comprehensive U-value calculation along with a condensation risk analysis for your project, please consult the Kingspan Insulation Technical Service Department for assistance (see rear cover for details).

## U-value table key

Further information on the applicable notional and area weighted average limiting U-values is available in the relevant geographical documentation:

- Approved Documents L to the Building Regulations for England;
- Approved Documents L to the Building Regulations for Wales;
- Technical Handbooks Section 6 to the Building Standards for Scotland;
- Technical Booklets F1 & F2 to the Building Regulations for Northern Ireland; and
- Technical Guidance Document L (Dwellings) and Technical Guidance Document L (Buildings other than Dwellings) to the Building Regulations for the Republic of Ireland.

## Concrete deck

### Dense concrete deck with suspended ceiling

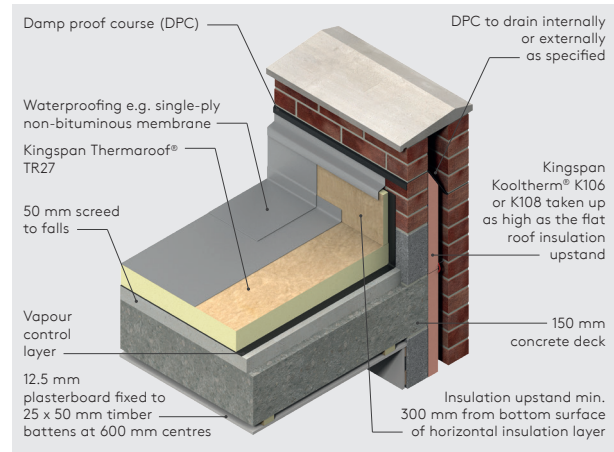


Figure 1

U-values (W/m <sup>2</sup> K) for various thicknesses of insulation and waterproofing systems			
Insulant thickness (mm)	Waterproofing system		
	Partially bonded built-up felt	Mastic asphalt	Fully adhered single-ply / cold liquid applied
90	0.24	0.24	0.24
100	0.22	0.22	0.22
110	0.20	0.20	0.20
120	0.18	0.18	0.18
130	0.17	0.17	0.17
140	0.16	0.16	0.16
150	0.15	0.15	0.15
160	0.14	0.14	0.14
90 + 100*	0.12	0.12	0.12
100 + 110*	0.11	0.11	0.11
100 + 120*	0.10	0.10	0.10

\* Where multiple layers of insulation of different thicknesses are used, the thickest layer should be installed as the outermost layer in the construction.

NB Refer to local distributor or Kingspan Insulation price list for current stock and non-stock sizes.

# Typical constructions and U-values

## Timber deck

### Timber deck with plasterboard ceiling

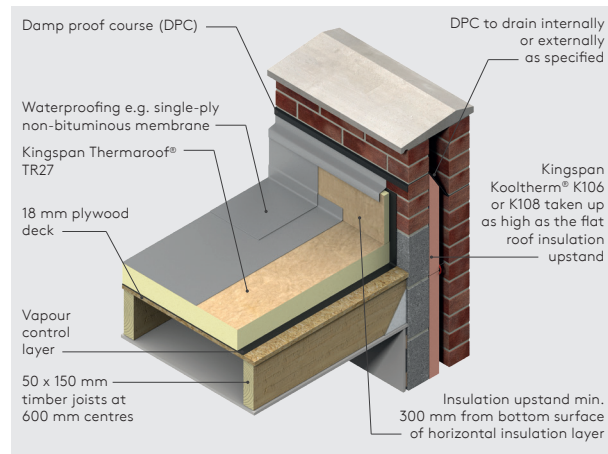


Figure 2

## Metal deck

### Metal deck with no ceiling

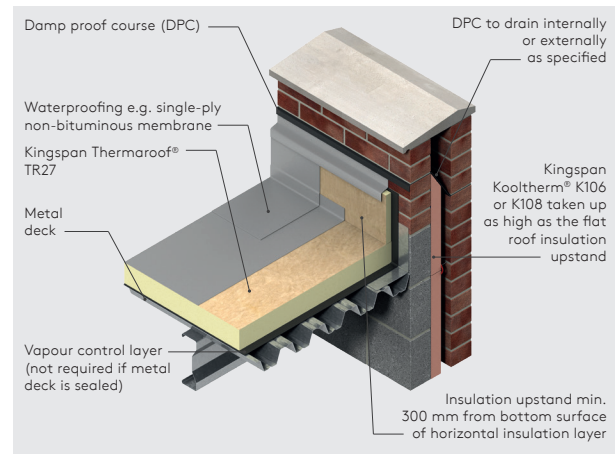


Figure 3

U-values (W/m <sup>2</sup> K) for various thicknesses of insulation and waterproofing systems			
Insulant thickness (mm)	Waterproofing system		
	Partially bonded built-up felt	Mastic asphalt	Fully adhered single-ply / cold liquid applied
90	0.24	0.24	0.24
100	0.22	0.22	0.22
110	0.20	0.20	0.20
120	0.18	0.18	0.18
130	0.17	0.17	0.17
140	0.16	0.16	0.16
150	0.15	0.15	0.15
160	0.14	0.14	0.14
80 + 90*	0.13	0.13	0.14
90 + 100*	0.12	0.12	0.12
100 + 110*	0.11	0.11	0.11
100 + 120*	0.10	0.10	0.10

\* Where multiple layers of insulation of different thicknesses are used, the thickest layer should be installed as the outermost layer in the construction.

NB Refer to local distributor or Kingspan Insulation price list for current stock and non-stock sizes.

U-values (W/m <sup>2</sup> K) for various thicknesses of insulation and waterproofing systems			
Insulant thickness (mm)	Waterproofing system		
	Partially bonded built-up felt	Mastic asphalt	Fully adhered single-ply / cold liquid applied
100	0.24	0.24	0.24
110	0.22	0.22	0.22
120	0.19	0.19	0.19
130	0.18	0.18	0.18
140	0.17	0.17	0.17
150	0.16	0.16	0.16
160	0.15	0.15	0.15
80 + 90*	0.14	0.14	0.14
100 + 100	0.12	0.12	0.12
100 + 110*	0.11	0.11	0.11
110 + 120*	0.10	0.10	0.10

\* Where multiple layers of insulation of different thicknesses are used, the thickest layer should be installed as the outermost layer in the construction.

NB Refer to local distributor or Kingspan Insulation price list for current stock and non-stock sizes.

# Typical constructions and U-values

## Green roof systems

Extensive green roof covering - metal deck with no ceiling

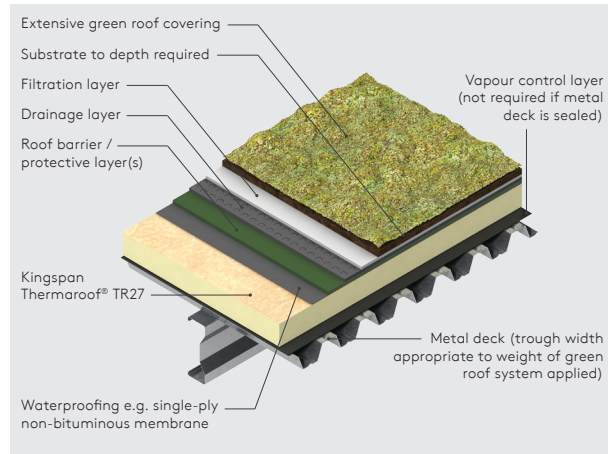


Figure 4

Semi-intensive green roof covering - dense concrete deck with suspended ceiling

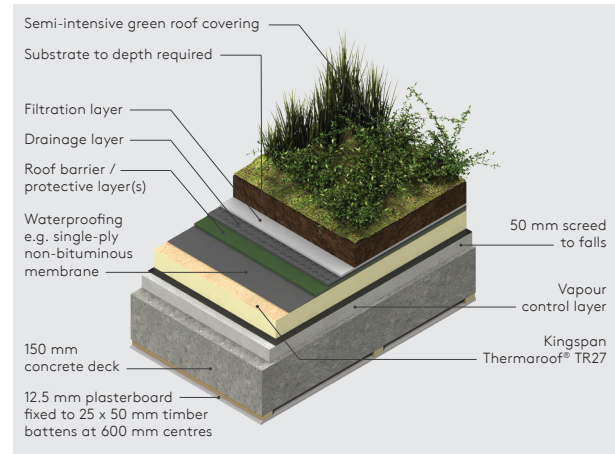


Figure 5

U-values (W/m <sup>2</sup> K) for various thicknesses of insulation and waterproofing systems			
Insulant thickness (mm)	Waterproofing system		
	Partially bonded built-up felt	Mastic asphalt	Fully adhered single-ply / cold liquid applied
100	0.24	0.24	0.24
110	0.22	0.22	0.22
120	0.19	0.19	0.19
130	0.18	0.18	0.18
140	0.17	0.17	0.17
150	0.16	0.16	0.16
160	0.15	0.15	0.15
80 + 90*	0.14	0.14	0.14
100 + 100	0.12	0.12	0.12
100 + 110*	0.11	0.11	0.11
110 + 120*	0.10	0.10	0.10

\* Where multiple layers of insulation of different thicknesses are used, the thickest layer should be installed as the outermost layer in the construction.

NB Refer to local distributor or Kingspan Insulation price list for current stock and non-stock sizes.

U-values (W/m <sup>2</sup> K) for various thicknesses of insulation and waterproofing systems			
Insulant thickness (mm)	Waterproofing system		
	Partially bonded built-up felt	Mastic asphalt	Fully adhered single-ply / cold liquid applied
90	0.24	0.24	0.24
100	0.22	0.22	0.22
110	0.20	0.20	0.20
120	0.18	0.18	0.18
130	0.17	0.17	0.17
140	0.16	0.16	0.16
150	0.15	0.15	0.15
160	0.14	0.14	0.14
90 + 100*	0.12	0.12	0.12
100 + 110*	0.11	0.11	0.11
100 + 120*	0.10	0.10	0.10

\* Where multiple layers of insulation of different thicknesses are used, the thickest layer should be installed as the outermost layer in the construction.

NB Refer to local distributor or Kingspan Insulation price list for current stock and non-stock sizes.

---

# Design considerations

---

## Linear thermal bridging

### Basic principles

Linear thermal bridging describes the heat loss / gain that occurs at junctions between elements e.g. where an external wall meets the roof, or at junctions around openings in the building fabric where the thermal insulation layer is discontinuous e.g. sills, jambs and lintels.

Interruptions within the insulation layer by materials with poorer insulating properties can result in a thermal bridge, which in turn can lead to problems of condensation and mould growth, especially if there is a drop in surface temperature.

The heat flow at these junctions and opening locations, over and above that through the adjoining plane elements, is the linear thermal transmittance of the thermal bridge: measured in W/mK; referred to as a 'psi-value'; and expressed as a ' $\psi$ -value'.

The lower the  $\psi$ -value, the better the performance.  $\psi$ -values are taken into account in the calculation methodologies e.g. the Standard Assessment Procedure (SAP), that are used to assess the operational CO<sub>2</sub> emissions and, where applicable, the fabric energy efficiency of buildings, primary energy or delivered energy rates.

$\psi$ -values can comprise either, or a combination of, calculated and assumed values.

## Reducing linear thermal bridging

Detailing at junctions to minimise the effects of thermal bridging and the associated risk of condensation or mould growth is important and there are some simple design considerations that can be adopted to help mitigate the risks and to reduce heat losses.

- Care is required to ensure continuation of insulation wherever possible between the wall and roof for best thermal performance. Where this is not possible, the roof and wall insulation should be overlapped and ideally, insulation material introduced between.
- Parapet detailing can represent a good, low heat loss approach, with insulation continuity maintained using an insulated upstand to reduce cold bridging. Where upstands exist Kingspan Thermaroof® TR27 should be used around the perimeter on the internal façade of the parapets to achieve a minimum thermal resistance of 1.10 m<sup>2</sup>K/W. The upstand should extend a minimum of 150 mm above the roof insulation and achieve a minimum distance of 300 mm between the top of the insulation upstand and the bottom of the horizontal roof insulation. Wall insulation should be carried up into parapets at least as high as the flat roof insulation upstand.
- Lightweight aggregate blockwork to the inner leaf of wall constructions can help to improve thermal performance at junctions generally and where used for the inner leaf of parapet walls it can help to reduce losses.
- Where a parapet construction is not used, to achieve best performance, the roof insulation should be carried over the wall plate to meet and extend past the wall insulation layer. For a timber warm roof construction, the first joist zone above the wall plate can be filled with insulation for best performance and to maintain thermal continuity.
- For best thermal performance, roof-lights and ventilator kerbs should be insulated with the same thickness of Kingspan Thermaroof® TR27 as the general roof area.
- Where guttering is incorporated within a flat roof construction, this should be accounted for within the overall thermal design of the roof via an area-weighted calculation for the whole roof; the risk of localised interstitial condensation from reduced insulation provision at the gutter should be considered.

---

# Design considerations

---

## Responsible sourcing

Kingspan Thermaroof® TR27 produced at Kingspan Insulation's Pembridge (Herefordshire), Selby (North Yorkshire) and Castleblayney (Co. Monaghan) manufacturing facilities is certified to BES 6001 (Framework Standard for the Responsible Sourcing of Construction Products) 'Good'.



To download the certification please view [here](#).

## Sustainability & responsibility

Kingspan Insulation has a long-term commitment to sustainability and responsibility: as a manufacturer and supplier of insulation products; as an employer; as a substantial landholder; and as a key member of its neighbouring communities.

A report covering the sustainability and responsibility of Kingspan Insulation Ltd's British operations at its Pembridge (Herefordshire) and Selby (North Yorkshire) manufacturing facilities is available upon request from [literature@kingspaninsulation.co.uk](mailto:literature@kingspaninsulation.co.uk)

## Specification clause

Kingspan Thermaroof® TR27 should be described in specifications as:-

The roof insulation shall be Kingspan Thermaroof® TR27\_\_\_\_\_ mm thick: comprising a rigid thermoset polyisocyanurate insulation core faced on both sides with a coated glass tissue facing. The product shall be manufactured in accordance with the requirements of BS EN 13165: 2012 + A2: 2016; under a management system certified to ISO 9001: 2015, ISO 14001: 2015, ISO 45001: 2018, ISO 50001: 2018 and ISO 37301: 2021; by Kingspan Insulation Limited; and installed in accordance with the instructions issued by them.

## Product classifications

Uniclass UK

Pr\_25\_71\_63\_66 Polyisocyanurate (PIR) foam boards

CAWS

J21 420, J31 333, J41 420, J42 420 (Standard and Intermediate)  
J21 25, J31 26, J41 26, J42 27 (Minor Works)

Details also available at [source.thenbs.com](http://source.thenbs.com).

## Building Information Modelling (BIM)

BIM objects for Kingspan Thermaroof® TR27 can be downloaded at [source.thenbs.com](http://source.thenbs.com).

## Wind loading

Wind loadings should be assessed in accordance with BS EN 1991-1-4: 2005 + A1: 2010 (National Annex to Eurocode 1 Actions on Structures. General Actions. Wind Actions) taking into account:

- length / width / height of the building;
- orientation of the building;
- wind speed;
- aspect (e.g. on a hill side); and
- topographical value of the surrounding area.

## Falls

The fall on a flat roof, constructed using Kingspan Thermaroof® TR27, is normally provided by the supporting structure being directed towards the rainwater outlets. The fall should be smooth and steep enough to prevent the formation of rainwater ponds. In order to ensure adequate drainage, BS 6229: 2018 (Flat roofs with continuously supported coverings. Code of practice) recommends uniform gradients of not less than 1 in 80. However, because of building settlement, it is advisable to design in even greater falls. These can be provided by a Kingspan Thermataper® tapered roofing system (see below).

## Tapered roofing

Kingspan Thermaroof® TR27 is also available in a tapered version, Kingspan Thermataper® TT47, comprising a rigid thermoset polyisocyanurate insulation core, faced on both sides with a coated glass tissue facing. Kingspan Thermataper® TT47 comes with a supporting design service. This ensures that the most cost-effective solution for a roof is identified and that the end result is a tapered system design which meets a roof's rainwater run-off and insulation requirements. Further details of Kingspan Thermataper® TT47 are available from the Kingspan Insulation Tapered Roofing Department (see rear cover), which should be consulted as early as possible in the process of designing a roof.

---

# Design considerations

---

## Roof waterproofing

Kingspan Thermaroom® TR27 is suitable for use with most fully adhered single-ply waterproofing membranes. When using Kingspan Thermaroom® TR27 with fully adhered single-ply waterproofing membranes, the joints between boards and cut edges, immediately below the waterproofing membrane, must be taped with a min. 50 mm wide foil tape. Please contact the Kingspan Insulation Technical Service Department (see rear cover) to check waterproofing membrane and proprietary adhesive system compatibility. Advice should be sought, from the appropriate waterproofing membrane manufacturer, in relation to the requirement for the use of a fleece backed membrane with the waterproofing membrane in question.

Kingspan Thermaroom® TR27 is also suitable for use with most bitumen based waterproofing systems including high performance types which incorporate a partially bonded underlay to BS EN 13707: 2013 (Flexible sheets for waterproofing. Reinforced bitumen sheets for roof waterproofing. Definitions and characteristics).

Partially bonded built-up felt waterproofing should be laid, where applicable, in accordance with BS 8217: 2005 (Reinforced bitumen membranes for roofing. Code of practice).

Kingspan Thermaroom® TR27 is also suitable for use with mastic asphalt waterproofing systems. Mastic asphalt waterproofing should be laid, where applicable, in accordance with BS 8218: 1998 (Code of practice for mastic asphalt roofing). Mastic asphalt should always be laid over an isolating layer of loose-laid Type 4A sheathing felt to BS EN 13707: 2013 (Flexible sheets for waterproofing. Reinforced bitumen sheets for roof waterproofing. Definitions and characteristics). The exposed face of insulation upstands, at parapets and abutments, must be lined with 18 mm exterior grade plywood, prior to the mastic asphalt waterproofing being laid. The plywood is used as an anchor point for the expanded metal substrate onto which the vertical mastic asphalt is laid.

When Kingspan Thermaroom® TR27 is to be used to insulate balconies, waterproofed with mastic asphalt with a porous promenade tile overlay, a 20 mm cork roofboard should be bitumen bonded to the Kingspan Thermaroom® TR27 prior to laying the Type 4A sheathing felt and mastic asphalt.

Kingspan Thermaroom® TR27 is also suitable for use with some cold liquid applied waterproofing systems. When using Kingspan Thermaroom® TR27 with cold liquid applied waterproofing systems, a carrier membrane for the waterproofing must be installed over the insulation boards. Advice should be sought, from the waterproofing system manufacturer, about the specification of the carrier membrane and the compatibility of the waterproofing system with Kingspan Thermaroom® TR27. For further advice please contact the Kingspan Insulation Technical Service Department (see rear cover).

NB Kingspan Thermaroom® TR27 is also suitable for use with mechanically fixed single-ply waterproofing membranes.

## Water vapour control

Kingspan Thermaroom® TR27 should be installed over a separate vapour control layer, in new build roofs, unless it is being used in conjunction with a sealed metal deck. Regardless of the deck type it is recommended that a condensation risk analysis is carried out for every project.

For refurbishment projects, involving the addition of insulation to existing insulated flat roofs, or roofs constructed of insulated steel faced composite panels, it is imperative that a U-value calculation and condensation risk analysis is carried out for every project, in order to ensure that the correct thickness of insulation is installed to achieve the required thermal performance, whilst avoiding interstitial condensation.

In refurbishment projects, where Kingspan Thermaroom® TR27 is to be installed over an existing bituminous waterproofing membrane, the membrane can be used as a vapour control layer, as long as it is in a good water tight condition. Where this is not the case, a separate vapour control layer should be installed.

The type of separate vapour control layer required will be dependent upon the chosen method of fixing the insulation boards.

For mechanically fixed applications, a minimum vapour control layer should consist of a 1000 gauge (250 micron) polythene sheet, with all joints lapped and then sealed with double sided self adhesive tape.

For applications where the insulation boards are to be bonded to the vapour control layer, a minimum vapour control layer should consist of a coated roofing felt complying with Type 3B to BS EN 13707: 2013 (Flexible sheets for waterproofing. Reinforced bitumen sheets for roof waterproofing. Definitions and characteristics), or S1P1 to BS 8747: 2007 (Reinforced bitumen membranes (RBMs) for roofing. Guide to selection and specification), or any appropriate metal-cored vapour control layer.

Where the separate vapour control layer is to be bonded, allowance should be made for adequate bonding of the vapour control layer to the substrate, so as to provide a suitable surface upon which to lay the insulation boards and sufficient resistance to wind up-lift (see 'Wind loading').

---

# Design considerations

---

## Roof loading / traffic

Kingspan Thermarroof® TR27 is suitable for use on access roof decks subject to limited foot traffic.

Where inappropriate foot traffic is liable to occur, it is recommended that, for roofs waterproofed with mastic asphalt, a 20 mm cork roofboard is bitumen bonded to the Kingspan Thermarroof® TR27 prior to waterproofing, and the roof surface is protected by promenade tiles.

Where inappropriate foot traffic is liable to occur, it is recommended that, for roofs waterproofed with partially bonded built-up felt, the roof surface is protected by promenade tiles.

Where inappropriate foot traffic is liable to occur, it is recommended that, for roofs waterproofed with fully adhered single-ply or cold liquid applied waterproofing systems, the roof surface is protected by specially constructed walk-ways.

For further advice on the acceptability of specific foot traffic regimes, please contact the Kingspan Insulation Technical Service Department (see rear cover for details).

---

## Spanning on metal decks

Insulation boards should comply with the minimum thicknesses shown in the table below, when used over metal decks with trough openings.

Trough opening (mm)	Minimum insulant thickness (mm)
≤ 75	25
76-100	30
101-125	35
126-150	40
151-175	45
176-200	50
201-225	55
226-250	60

## Green roofs

Kingspan Thermarroof® TR27 is suitable for use under most green roof systems.

Green roof systems are a specialist design area. When designing a loose-laid insulated green roof assembly consideration needs to be given to the following.

Green roof systems are required to have a minimum dry weight of 80 kg/m<sup>2</sup> to ballast the insulation boards beneath them. However, the total required dry weight will depend upon wind uplift, which in turn will vary with the geographical location of the building, local topography, and the height and width of the roof concerned. The necessity for any additional dry weight should be assessed in accordance with BS EN 1991-1-4: 2005 + A1: 2010 (National Annex to Eurocode 1 Actions on structures. General Actions. Wind Actions).

When installing a loose-laid insulated green roof assembly, any insulation must be immediately over-laid with the green roof system, which must meet all of the requirements outlined above.

Where these requirements cannot be ensured, the insulation must be mechanically fixed (see Sitework). For further information please contact the Kingspan Insulation Technical Service Department (see rear cover for details).

---

# Sitework

---

## Board size selection

- If consideration is being given to bonding Kingspan Thermaroof® TR27, either in hot bitumen or with the use of a suitable alternative proprietary adhesive system, it is recommended that 1.2 x 0.6 m or 1.2 x 1.2 m boards are used.
- All sizes of board are suitable for mechanical fixing.

---

## Installing over metal decks

- Where an FM Approved construction is required, please refer to 'FM Approval' on page 5.
- Metal decks should be clean, dry, without large projections, steps or gaps, and should be graded to allow correct falls to all rainwater outlets.
- If using a sealed metal deck there is no requirement for a separate vapour control layer.
- If the metal deck is not sealed, and the insulation boards are to be bonded down, in order to ensure an adequate bond between the metal deck and the vapour control layer, the metal deck should be suitably primed, in accordance with the primer manufacturer's instructions, prior to the application of the hot bitumen, or suitable alternative proprietary adhesive system, used to bond the vapour control layer to the deck.
- If the metal deck is not sealed, and the insulation boards are to be mechanically fixed, the vapour control layer should be loose-laid.
- Where one run of the specified vapour control layer laps another, there should be minimum 150 mm side and end overlaps, which should be adequately sealed.
- Turn up the vapour control layer at the edge of the roof to a height appropriate to the specified waterproofing membrane.
- Boards of Kingspan Thermaroof® TR27 should be secured to the deck using mechanical fixings e.g. telescopic tube fasteners (see 'Mechanical Fixings').
- Alternatively, the insulation boards should be bonded down by laying into hot bitumen (max. temperature 240°C) mopped or poured over the vapour control layer / sealed metal deck, or with the use of a suitable alternative proprietary adhesive system.

- Insulation boards should always be laid break-bonded, either with their long edges at right angles to the trough openings, or diagonally across the corrugation line, and with joints lightly butted. There should be no gaps at abutments.
- Roof-light or ventilator kerbs etc. should always be insulated with the same thickness of Kingspan Thermaroof® TR27 as the general roof area.
- Where upstands exist Kingspan Thermaroof® TR27 should be used around the perimeter on the internal façade of the parapets to achieve a minimum thermal resistance of 1.10 m<sup>2</sup>K/W.
- A minimum distance of 300 mm should be maintained between the top of the insulation upstand and the bottom of the horizontal roof insulation.
- For roofs without parapets, a timber edging batten of the same height of the insulation is to be used to fix the fascia board to the gutter system. Please contact the membrane manufacturer for more details.
- The waterproofing membrane is installed in accordance with the membrane manufacturer's instructions, over the whole insulated area including any insulation upstands, as soon as possible after laying the insulation boards.

---

## Installing over concrete decks

- Where an FM Approved construction is required, please refer to 'FM Approval' on page 5.
- Concrete decks should be clean, dry, without large projections, steps or gaps, and should be graded to allow correct falls to all rainwater outlets.
- If the insulation boards are to be bonded down, in order to ensure an adequate bond between the vapour control layer and the concrete deck, the concrete or screeded surface should be suitably primed, in accordance with the primer manufacturer's instructions, prior to the application of the hot bitumen, or suitable alternative proprietary adhesive system, used to bond the vapour control layer to the deck.
- If the insulation boards are to be mechanically fixed, the vapour control layer should be loose-laid.
- Where one run of the specified vapour control layer laps another, there should be minimum 150 mm side and end overlaps, which should be adequately sealed.

---

# Sitework

---

- Turn up the vapour control layer at the edge of the roof to a height appropriate to the specified waterproofing membrane.
- Boards of Kingspan Thermarroof® TR27 should be bonded down by laying into hot bitumen (max. temperature 240°C) mopped or poured over the vapour control layer, or with the use of a suitable alternative proprietary adhesive system.
- Alternatively, the insulation boards should be secured to the deck using mechanical fixings e.g. telescopic tube fasteners (see 'Mechanical Fixings').
- Insulation boards should always be laid break-bonded, either with their long edges at right angles to the edge of, or diagonally across the roof, and with joints lightly butted. There should be no gaps at abutments.
- Roof-light or ventilator kerbs etc. should always be insulated with the same thickness of Kingspan Thermarroof® TR27 as the general roof area.
- Where upstands exist Kingspan Thermarroof® TR27 should be used around the perimeter on the internal façade of the parapets to achieve a minimum thermal resistance of 1.10 m<sup>2</sup>K/W.
- A minimum distance of 300 mm should be maintained between the top of the insulation upstand and the bottom of the horizontal roof insulation.
- For roofs without parapets, a timber edging batten of the same height of the insulation is to be used to fix the fascia board to the gutter system. Please contact the membrane manufacturer for more details.
- The waterproofing membrane is installed in accordance with the membrane manufacturer's instructions, over the whole insulated area including any insulation upstands, as soon as possible after laying the insulation boards.

## Installing over plywood decks

- Plywood decks should be clean, dry, without large projections, steps or gaps, and should be graded to allow correct falls to all rainwater outlets.
- If the insulation boards are to be bonded down, in order to ensure an adequate bond between the plywood deck and the vapour control layer, the plywood surface should be suitably primed, in accordance with the primer manufacturer's instructions, prior to the application of the hot bitumen, or suitable alternative proprietary adhesive system, used to bond the vapour control layer to the deck.
- Alternatively, the vapour control layer can be nailed to the deck, in which case the nail heads will become sealed with the subsequent bonding of the insulation boards to the vapour control layer.
- If the insulation boards are to be mechanically fixed, the vapour control layer should be loose-laid.
- Where one run of the specified vapour control layer laps another, there should be minimum 150 mm side and end overlaps, which should be adequately sealed.
- Turn up the vapour control layer at the edge of the roof to a height appropriate to the specified waterproofing membrane.
- Boards of Kingspan Thermarroof® TR27 should be bonded down by laying into hot bitumen (max. temperature 240°C) mopped or poured over the vapour control layer, or with the use of a suitable alternative proprietary adhesive system.
- Alternatively, the insulation boards should be secured to the deck using mechanical fixings e.g. telescopic tube fasteners (see 'Mechanical Fixings').
- Insulation boards should always be laid break-bonded, either with their long edges at right angles to the edge of, or diagonally across the roof, and with joints lightly butted. There should be no gaps at abutments.
- Joints between insulation boards should not coincide with those between the plywood sheets.
- Roof-light or ventilator kerbs etc. should always be insulated with the same thickness of Kingspan Thermarroof® TR27 as the general roof area.
- Where upstands exist Kingspan Thermarroof® TR27 should be used around the perimeter on the internal façade of the parapets to achieve a minimum thermal resistance of 1.10 m<sup>2</sup>K/W.
- For roofs without parapets, a timber edging batten of the same height of the insulation is to be used to fix the fascia board to the gutter system. Please contact the membrane manufacturer for more details.
- The waterproofing membrane is installed in accordance with the membrane manufacturer's instructions, over the whole insulated area including any insulation upstands, as soon as possible after laying the insulation boards.

## Installing over existing flat roofs

- The existing waterproofing membrane surface should be clean, dry, without large projections, steps or gaps, and should be graded to allow correct falls to all rainwater outlets.
- Where the existing waterproofing membrane is not fit for purpose as a vapour control layer, and the new insulation boards are to be bonded down, a separate vapour control layer should be bonded to it with hot bitumen, or suitable alternative proprietary adhesive system. If the insulation boards are to be mechanically fixed, the vapour control layer should be loose-laid.
- Where one run of the specified vapour control layer laps another, there should be minimum 150 mm side and end overlaps, which should be adequately sealed.
- Turn up the vapour control layer at the edge of the roof to a height appropriate to the specified new waterproofing membrane.
- Boards of Kingspan Thermaroom® TR27 should be bonded down by laying into hot bitumen (max. temperature 240°C) mopped or poured over the vapour control layer, or with the use of a suitable alternative proprietary adhesive system.
- Alternatively, the insulation boards should be secured to the deck using mechanical fixings e.g. telescopic tube fasteners (see 'Mechanical Fixings').
- Insulation boards should always be laid break-bonded, either with their long edges at right angles to the edge of, or diagonally across the roof, and with joints lightly butted. There should be no gaps at abutments.
- Roof-light or ventilator kerbs etc. should always be insulated with the same thickness of Kingspan Thermaroom® TR27 as the general roof area.
- Where upstands exist Kingspan Thermaroom® TR27 should be used around the perimeter on the internal façade of the parapets to achieve a minimum thermal resistance of 1.10 m<sup>2</sup>K/W.
- A minimum distance of 300 mm should be maintained between the top of the insulation upstand and the bottom of the horizontal roof insulation.
- For roofs without parapets, a timber edging batten of the same height of the insulation is to be used to fix the fascia board to the gutter system. Please contact the membrane manufacturer for more details.
- The waterproofing membrane is installed in accordance with the membrane manufacturer's instructions, over the whole insulated area including any insulation upstands, as soon as possible after laying the insulation boards.

## Installing over existing composite panel roofs

- If the existing profile provides inadequate support for the insulation boards, the existing roof should be over-boarded, e.g. with plywood, prior to their installation.
- Boards of Kingspan Thermaroom® TR27 should be secured to the deck using mechanical fixings. Please refer to the Kingspan Insulation Technical Advice Service (see rear cover for details) for advice on fixing specification.
- Insulation boards should always be laid break-bonded and with joints lightly butted. There should be no gaps at abutments. If the existing roof has been over-boarded, then insulation boards should be laid with their long edges at right angles to the edge of, or diagonally across the roof. If not, they should be laid either with their long edges at right angles to the trough openings, or diagonally across the corrugation line.
- Roof-light or ventilator kerbs etc. should always be insulated with the same thickness of Kingspan Thermaroom® TR27 as the general roof area.
- The waterproofing membrane is installed in accordance with the membrane manufacturer's instructions, over the whole insulated area including any insulation upstands, as soon as possible after laying the insulation boards.

# Sitework

## Mechanical fixings

- The number of mechanical fixings required to fix Kingspan Thermaroof® TR27 will vary with the geographical location of the building, the local topography, and the height and width of the roof concerned along with the deck type.
- A minimum of 4 fixings are required to secure 1.2 x 0.6 m boards of Kingspan Thermaroof® TR27 to the deck.
- A minimum of 5 fixings are required to secure 1.2 x 1.2 m boards of Kingspan Thermaroof® TR27 to the deck.
- A minimum of 6 fixings are required to secure 2.4 x 1.2 m boards of Kingspan Thermaroof® TR27 to the deck.
- The requirement for additional fixings should be assessed in accordance with BS 6399-2: 1997 (Loadings for buildings. Code of practice for wind loads) or BS EN 1991-1.4: 2005 + A1: 2010 (National Annex to Eurocode 1. Actions on structures. General Actions. Wind Actions).
- Mechanical fixings must be arranged in an even pattern.
- Fasteners at insulation board edges must be located > 50 and < 150 mm from edges and corners of the board and not overlap board joints.
- Please refer to page 14 for recommended fixing patterns.
- Each fixing should incorporate a square or circular plate washer (min. 50 x 50 mm or 50 mm diameter).
- If two layers of insulation are to be installed, the base layer should be mechanically fixed with minimum 1 No. fixing in the centre of the insulation board before fixing the top layer as described above.
- Where alternative mechanical fixing systems are specified, such as bar fixing systems, the specified system must give similar restraint to the insulation board as would be attained by the use of conventional telescopic tube fasteners.
- For details on fixings refer to:

Ejot UK Limited +44 (0) 1977 687 040  
[www.ejot.co.uk](http://www.ejot.co.uk)

Fixfast +44 (0) 1732 882 387  
[www.fixfast.com](http://www.fixfast.com)

MAK Fasteners +353 (0) 1 451 9900  
[www.makfasteners.com](http://www.makfasteners.com)

SFS Intec +44 (0) 1132 085 500  
[www.sfsintec.biz/uk](http://www.sfsintec.biz/uk)

## Installing in two layers

- In situations where two layers of insulation are required, both layers should be installed in the same manner, as detailed in the preceding sections. However, if mechanical fixing methods are to be employed, refer to 'Mechanical Fixings' for guidance on the number of fixings to be used in each layer.
- In all cases, the layers should be horizontally offset relative to each other so that, as far as possible, the board joints in the two adjacent layers do not coincide with each other (see Figure 6).

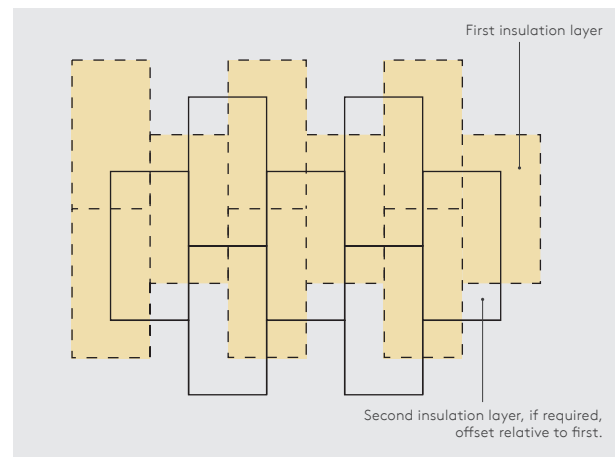


Figure 6 - Offsetting of multiple insulation layers

---

# Sitework

---

## General

### Following trades

- The roof must be adequately protected when building works are being carried out on or over the roof surface. This is best achieved by close boarding. The completed roof must not be used for storage of heavy building components such as bricks or air conditioning equipment.

### Reflective coatings

- Bitumen based built up waterproofing systems laid over Kingspan ThermoRoof® TR27 should always incorporate a solar reflective layer such as chippings or a specialist coating.

### Daily working practice

- At the completion of each day's work, or whenever work is interrupted for extended periods of time, a night joint must be made in order to prevent water penetration into the roof construction.

### Cutting

- Cutting should be carried out either by using a fine toothed saw, or by scoring with a sharp knife, snapping the board over a straight edge and then cutting the facing on the other side.
- Ensure accurate trimming to achieve close-butting joints and continuity of insulation.

## Availability

- Kingspan ThermoRoof® TR27 is available through specialist insulation distributors and selected roofing merchants throughout the UK and Ireland.

## Packaging and storage

- The polyethylene packaging of Kingspan Insulation products, which is recyclable, should not be considered adequate for outdoor protection.
- Ideally, boards should be stored inside a building. If, however, outside storage cannot be avoided, then the boards should be stacked clear of the ground and covered with an opaque polythene sheet or weatherproof tarpaulin. Boards that have been allowed to get wet should not be used.

## Health and safety

- Kingspan Insulation products are chemically inert.
- A Safety Information Data Sheet for this product is available from the Kingspan Insulation website [www.kingspaninsulation.co.uk/safety](http://www.kingspaninsulation.co.uk/safety) or [www.kingspaninsulation.ie/safety](http://www.kingspaninsulation.ie/safety).

Warning - do not stand on or otherwise support your weight on this board unless it is fully supported by a load bearing surface.

# Mechanical fixing patterns

## Recommended fixing patterns

The recommended fixing patterns for Kingspan Thermarroof® TR27 are shown below. The number of fixings necessary should be assessed in accordance with BS EN 1991-1-4: 2005 + A1: 2010 (National Annex to Eurocode 1. Actions on structures. General Actions. Wind Actions).

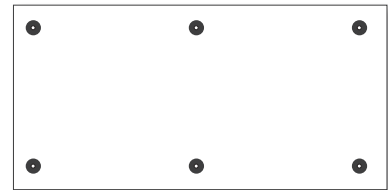
The images below show recommended fixing patterns, the number of fixings used and the resulting fixing density (number of fixings per m<sup>2</sup>).



4 No. per board  
(1.2 x 0.6 m board - 5.55 fixings / m<sup>2</sup>)

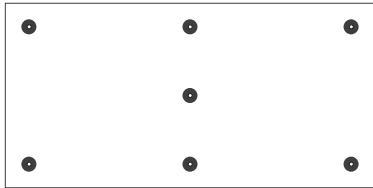


5 No. per board  
(1.2 x 0.6 m board - 6.94 fixings / m<sup>2</sup>)  
(1.2 x 1.2 m board - 3.47 fixings / m<sup>2</sup>)

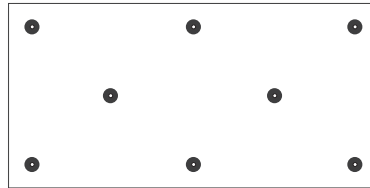


6 No. per board  
(1.2 x 0.6 m board - 8.33 fixings / m<sup>2</sup>)  
(1.2 x 1.2 m board - 4.16 fixings / m<sup>2</sup>)  
(2.4 x 1.2 m board - 2.08 fixings / m<sup>2</sup>)

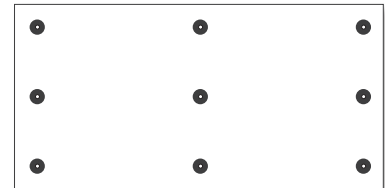
A minimum of 4 fixings are required to secure a 1.2 m x 0.6 m insulation board to the deck, a minimum of 5 fixings are required to secure a 1.2 x 1.2 m insulation board to the deck and a minimum of 6 fixings are required to secure a 2.4 x 1.2 m insulation board to the deck. Therefore, of the two fixing patterns above, that on the left can only be applied for a 1.2 x 0.6 m insulation board and that on the right for a 1.2 x 0.6 m insulation board or a 1.2 x 1.2 m insulation board.



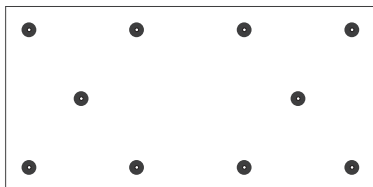
7 No. per board  
(1.2 x 0.6 m board - 9.72 fixings / m<sup>2</sup>)  
(1.2 x 1.2 m board - 4.86 fixings / m<sup>2</sup>)  
(2.4 x 1.2 m board - 2.43 fixings / m<sup>2</sup>)



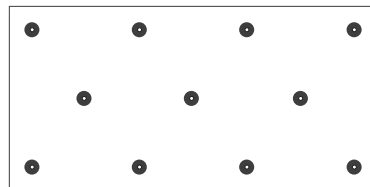
8 No. per board  
(1.2 x 0.6 m board - 11.11 fixings / m<sup>2</sup>)  
(1.2 x 1.2 m board - 5.55 fixings / m<sup>2</sup>)  
(2.4 x 1.2 m board - 2.77 fixings / m<sup>2</sup>)



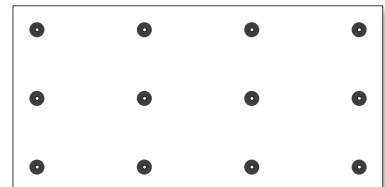
9 No. per board  
(1.2 x 0.6 m board - 12.50 fixings / m<sup>2</sup>)  
(1.2 x 1.2 m board - 6.25 fixings / m<sup>2</sup>)  
(2.4 x 1.2 m board - 3.12 fixings / m<sup>2</sup>)



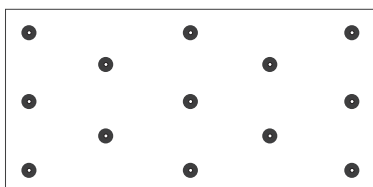
10 No. per board  
(1.2 x 0.6 m board - 13.88 fixings / m<sup>2</sup>)  
(1.2 x 1.2 m board - 6.94 fixings / m<sup>2</sup>)  
(2.4 x 1.2 m board - 3.47 fixings / m<sup>2</sup>)



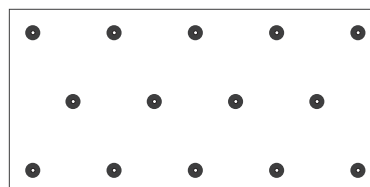
11 No. per board  
(1.2 x 0.6 m board - 15.27 fixings / m<sup>2</sup>)  
(1.2 x 1.2 m board - 7.63 fixings / m<sup>2</sup>)  
(2.4 x 1.2 m board - 3.81 fixings / m<sup>2</sup>)



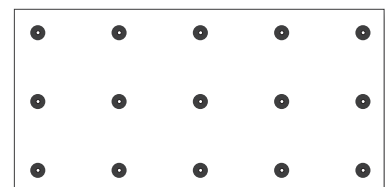
12 No. per board  
(1.2 x 0.6 m board - 16.66 fixings / m<sup>2</sup>)  
(1.2 x 1.2 m board - 8.33 fixings / m<sup>2</sup>)  
(2.4 x 1.2 m board - 4.16 fixings / m<sup>2</sup>)



13 No. per board  
(1.2 x 0.6 m board - 18.05 fixings / m<sup>2</sup>)  
(1.2 x 1.2 m board - 9.02 fixings / m<sup>2</sup>)  
(2.4 x 1.2 m board - 4.51 fixings / m<sup>2</sup>)



14 No. per board  
(1.2 x 0.6 m board - 19.44 fixings / m<sup>2</sup>)  
(1.2 x 1.2 m board - 9.72 fixings / m<sup>2</sup>)  
(2.4 x 1.2 m board - 4.86 fixings / m<sup>2</sup>)



15 No. per board  
(1.2 x 0.6 m board - 20.83 fixings / m<sup>2</sup>)  
(1.2 x 1.2 m board - 10.41 fixings / m<sup>2</sup>)  
(2.4 x 1.2 m board - 5.20 fixings / m<sup>2</sup>)

NB Mechanical fixings e.g. telescopic tube fasteners, must be arranged in an even pattern. Fasteners at board edges must be located > 50 mm and < 150 mm from edges and corners of the board and not overlap board joints.

---

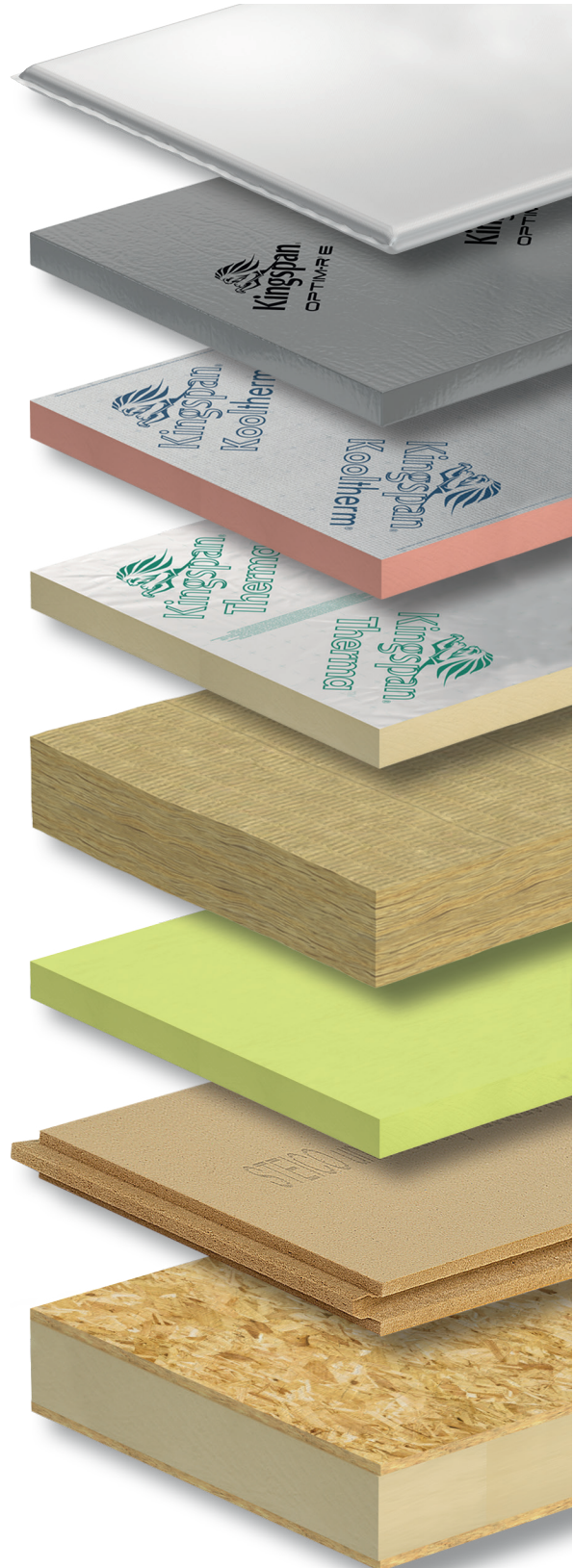
# About Kingspan Insulation

---

## Products & solutions

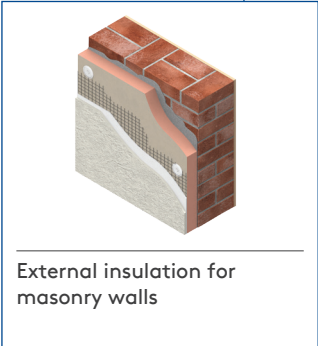
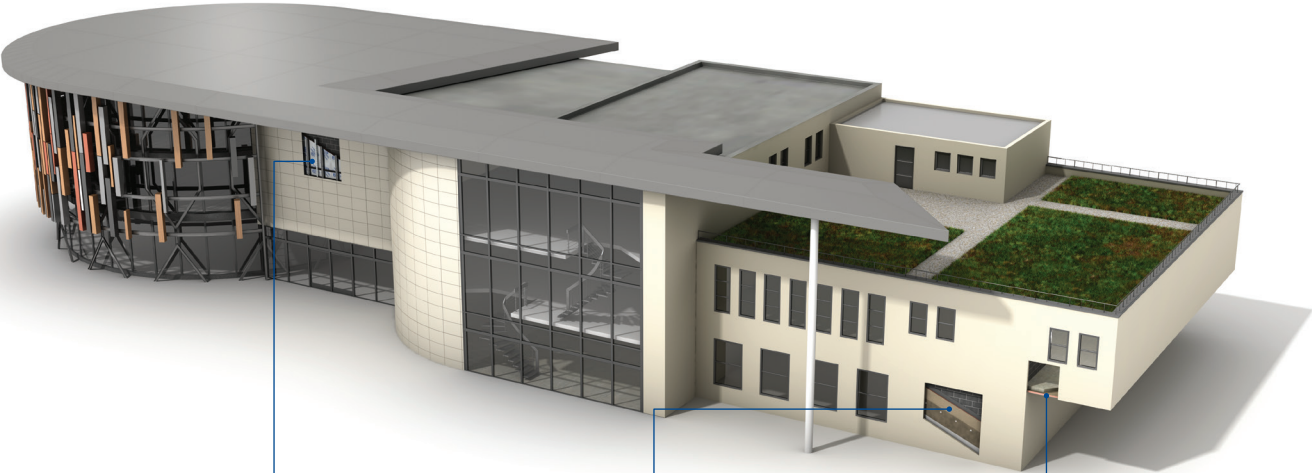
Rigid insulation products for building fabric applications, including roofs, walls and floors.

- Kingspan AlphaCore® – microporous silica-based insulation.
- Kingspan OPTIM-R® – vacuum insulation panel (VIP) systems.
- Kingspan Kooltherm® – phenolic insulation.
- Kingspan Therma™ – PIR insulation.
- K-Roc® – rock mineral fibre insulation.
- Kingspan GreenGuard® – extruded polystyrene insulation (XPS).
- STEICO – wood fibre insulation
- Kingspan TEK® – structural insulated panels (SIPs).
- Cavity closers – PVC-U extrusions with an insulation core.
- Membranes – for pitched roofs and walls.



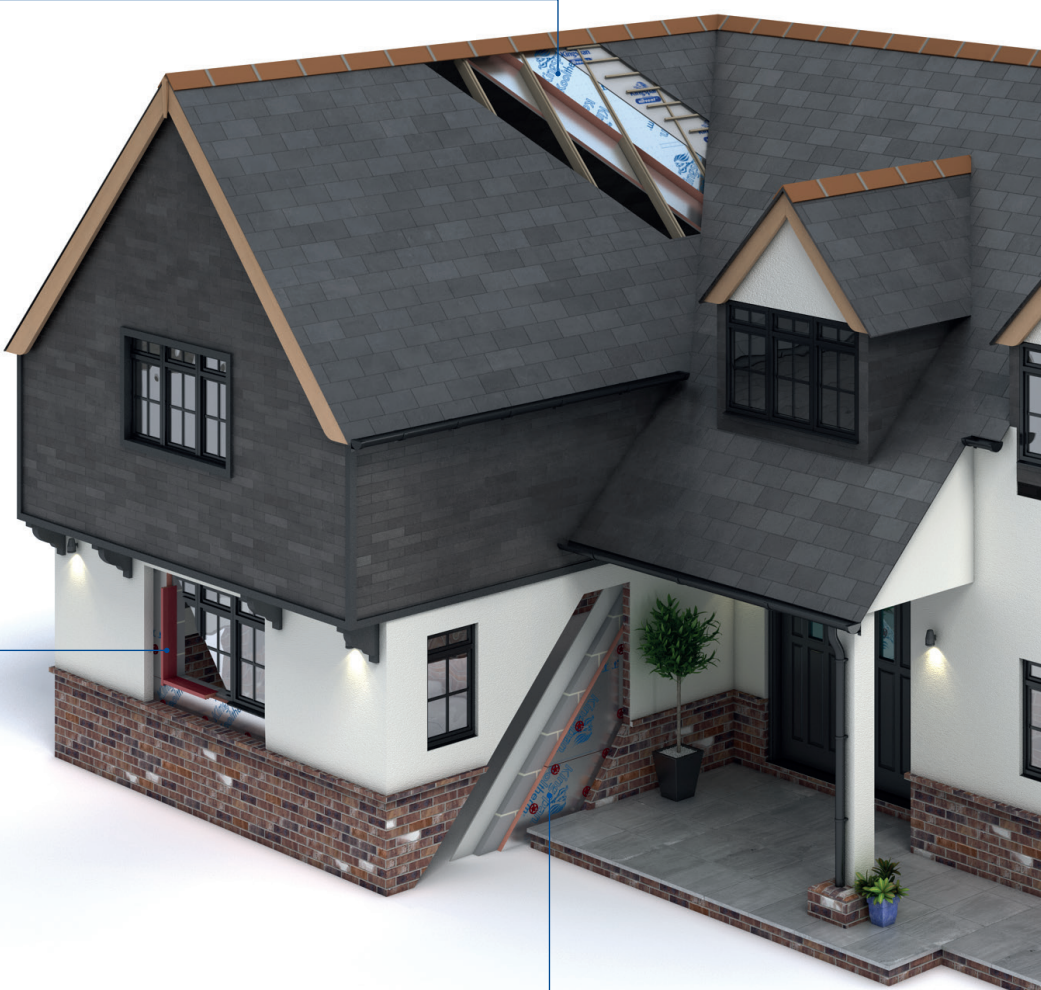
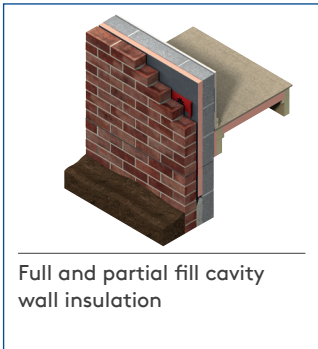
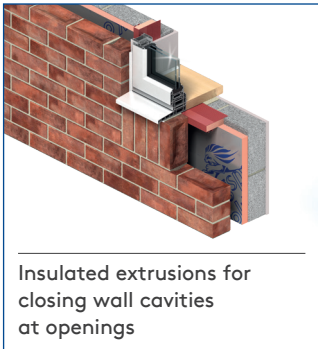
# About Kingspan Insulation

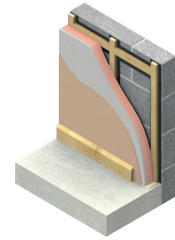
Solutions available for roofs, walls and floors of commercial buildings, from schools to retail.



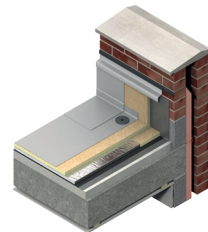
# About Kingspan Insulation

From new housing developments to refurbishing your home, we offer a number of different solutions for roof, wall and floor applications.

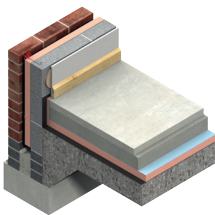




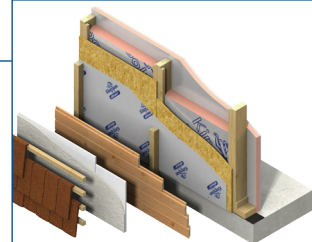
Insulation for tiled or slated pitched warm roof spaces



Insulation for flat roofs and terraces



Insulation for floors



Insulation for timber and steel framing systems

# About Kingspan Insulation

## Company details

Kingspan Insulation Ltd is part of the Kingspan Group plc., one of Europe's leading construction product manufacturers. The Kingspan Group was formed in the late 1960s and is a publicly quoted group of companies headquartered in Kingscourt, County Cavan, Ireland.



Kingspan Insulation Ltd is a market leading manufacturer of rigid insulation products and insulated systems for building fabric and building services applications.

Our head office is located in Pembridge, in the heart of rural Herefordshire. Our northern hub is near Selby in North Yorkshire. We also have a hub in Castleblayney, Ireland. All three sites are accredited to the independent compliance standard ISO 37301: 2021.



## Services

Our support services provide fast and accurate advice no matter what your role is. Visit our website to access the following services.

- U-value calculations – free, quick and easy U-value calculations with our U-value Calculator.
- Help and advice on your projects, including stockists, how to guides, regulatory guidance and e-learning.
- Dedicated Specification and Sales teams to support projects.



- Building Information Modelling (BIM) – download BIM objects for our products.
- Tapered roofing service – Kingspan Insulation's tapered roofing systems come with a supporting design service to ensure the most cost-effective solution for a roof is identified.



- CPDs – Kingspan Insulation offer a number of free CPD seminars for architects and specifiers covering a wide range of industry topics. CPDs can be booked or a range of online learning courses can be found online.
- Product awareness training (GB only) - build your team's knowledge with on-site training and support with one of our experienced product technicians who cover the full range of Kingspan products and applications, from flooring to roofing and everything in-between with both internal and external wall insulations.



# PLANET PASSIONATE

Planet Passionate is our group wide global sustainability programme.

Our Planet Passionate programme aims to have a positive impact on three big global challenges: climate change, circularity and protection of our natural world.



Scan for our latest progress report to learn more about our targets, partnerships and global commitments.

---

# Contact details

---

## Great Britain

Kingspan Insulation Ltd  
Pembroke | Leominster  
Herefordshire | HR6 9LA

T: +44 (0) 1544 388 601  
E: [info@kingspaninsulation.co.uk](mailto:info@kingspaninsulation.co.uk)  
[www.kingspaninsulation.co.uk](http://www.kingspaninsulation.co.uk)

For individual department contact details please visit  
[www.kingspaninsulation.co.uk/contact](http://www.kingspaninsulation.co.uk/contact)

---



Visit our free online U-value calculator.  
Offering free, quick and easy calculations  
for wall, floor and roof constructions.

## Ireland

Kingspan Insulation Ltd  
Castleblayney | County Monaghan

T: +353 (0) 42 979 5000  
E: [info@kingspaninsulation.ie](mailto:info@kingspaninsulation.ie)  
[www.kingspaninsulation.ie](http://www.kingspaninsulation.ie)

For individual department contact details please visit  
[www.kingspaninsulation.ie/contact](http://www.kingspaninsulation.ie/contact)



Visit our free online U-value calculator.  
Offering free, quick and easy calculations  
for wall, floor and roof constructions.



For the most up-to-date  
version of this brochure  
please scan or click [here](#).

To access pre-existing product information or information relating to previously sold/discontinued products please email [literature@kingspaninsulation.co.uk](mailto:literature@kingspaninsulation.co.uk).

The information contained in this brochure is believed to be correct at the date of publication. Kingspan Insulation Limited ("Kingspan Insulation") reserves the right to alter or amend the product specifications without notice due to continuous improvement commitments. There may also be relevant changes between publications with regard to legislation, or other developments affecting the accuracy of the information contained in this brochure. Product thicknesses shown in this document should not be taken as being available ex-stock and reference should be made to the current Kingspan Insulation price-list or advice sought from Kingspan Insulation's Customer Service Department. The information, technical details and fixing instructions etc. included in this literature are given in good faith and apply to uses described. Kingspan Insulation does not accept responsibility for issues arising from using products in applications different from those described within this brochure or failure to correctly follow the information or instructions as described within this brochure. Recommendations for use should be verified with a suitable expert or professional for suitability and compliance with actual requirements, specifications and any applicable laws and regulations. For other applications or conditions of use, Kingspan Insulation offers a technical advisory service (see above for contact details), the advice of which should be sought for uses of Kingspan Insulation products that are not specifically described herein. Please check that your copy of this literature is current by contacting the Kingspan Insulation Marketing Department.

© Kingspan, Kingspan GreenGuard, AlphaCore, Kooltherm, K-Roc, OPTIM-R, TEK, Thermaroof, Thermataper and the Lion Device are Registered Trademarks of the Kingspan Group plc in the UK, Ireland and other countries. All rights reserved.

TM Therma is a Trademark of the Kingspan Group plc.

Kingspan Insulation Ltd is not associated with, and its products have not necessarily been tested by, the GREENGUARD Environmental Institute.

Registered in England & Wales, No. 01882722. Registered Office: Pembroke, Leominster, Herefordshire HR6 9LA UK. VAT GB428602456.

Registered in Ireland, No. 54621. Registered Office: Bree Industrial Estate, Castleblayney, Co. Monaghan, Ireland. VAT IE45750691.

